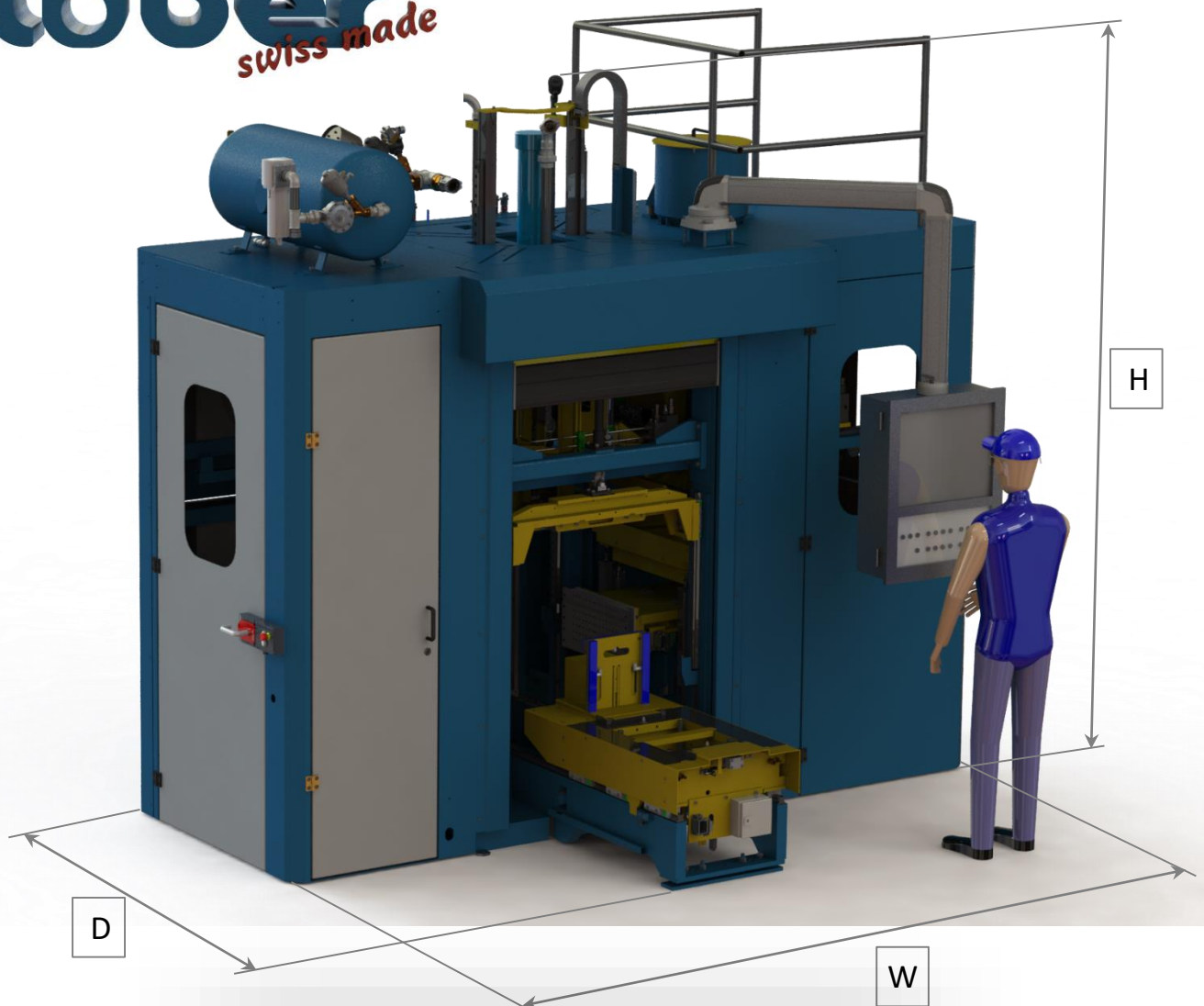


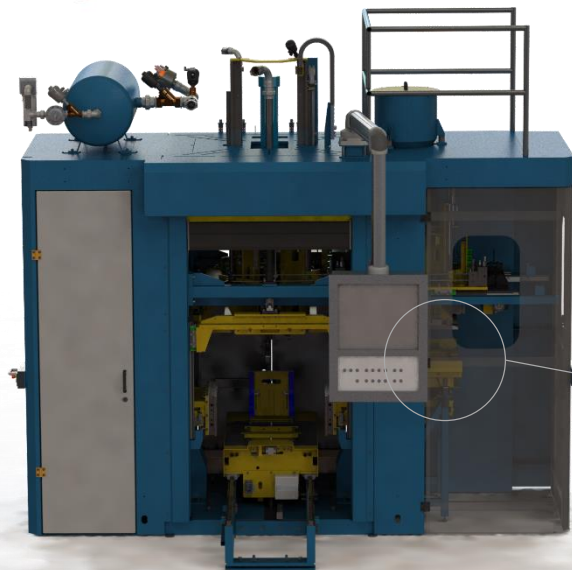
wüber

swiss made



Technical data	C1S-20
Shoot volume [liters]	max. 30l
Corebox size maximum [mm]	800 x 800
Shoot area maximum [mm]	550 x 550
Corebox weight maximum [kg]	2000
Closing force horizontal	210 kN
Dry cycle time* [s]	16
Machine dimensions WxDxH [mm]	ca. 3800 x 2800 x 3200

* machine cycle time in automatic mode without parameters for shooting time, gassing, exhaust
- considering stroke optimized horizontal parted toolings



shootplate cleaning
sand removal



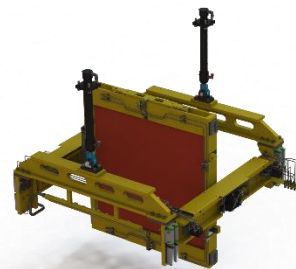
Advantages and special functions

- powerful shooting system
- shootplate cleaning station
- 90° turnable tooling top part
- Patented high efficient Lüber gassing process
- for all common core production processes
- Energy-efficient hydraulic unit
- state of the art graphical user interface
- modular design
- no pit/special foundation needed

energy-efficient hydraulic unit



rotary tooling top part



split supply of catalyst and
hot purge air (patented)



closed filling-system for shoot
unit in inorganic production
- no sand dry out -

