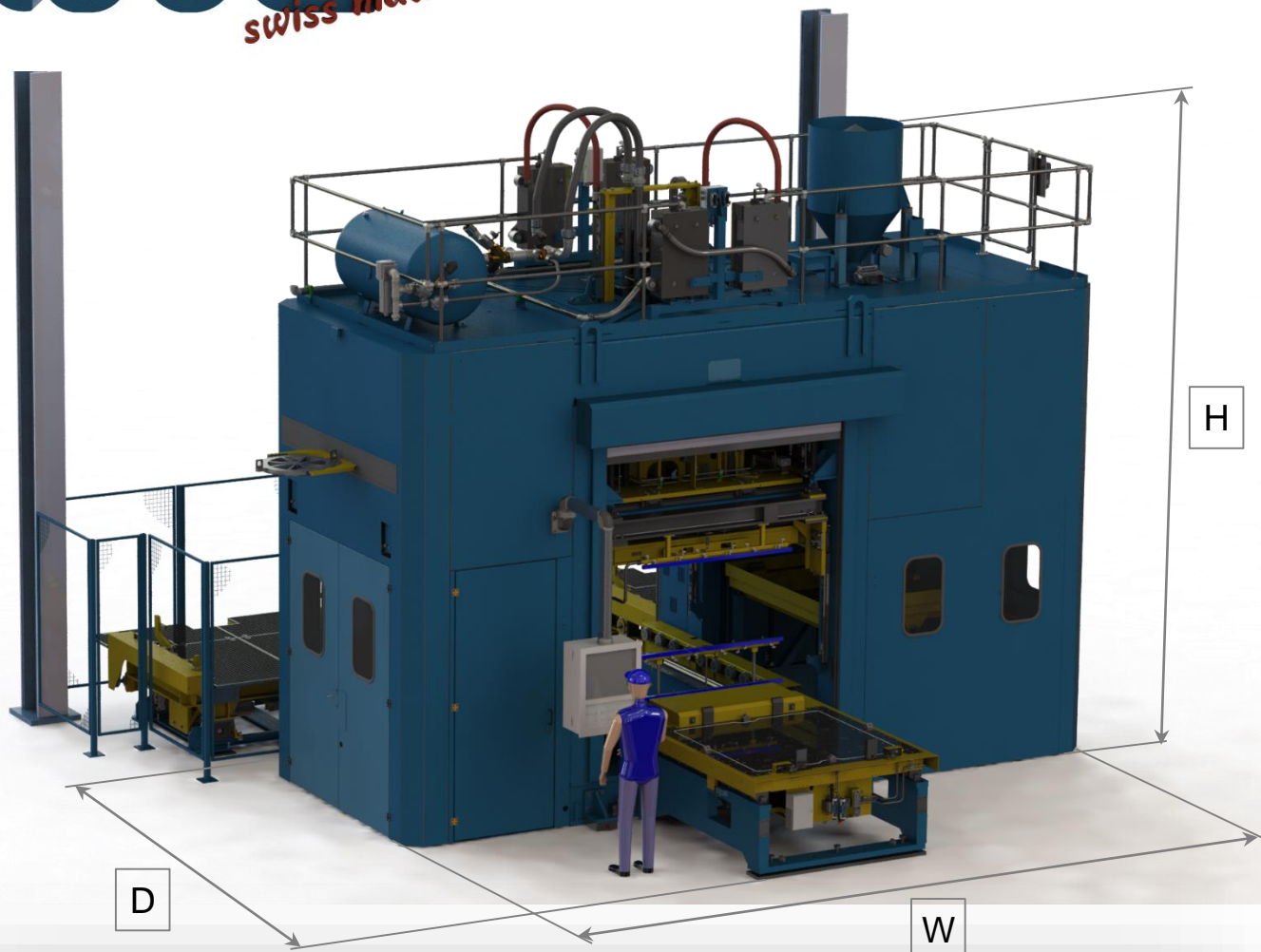


wüber

swiss made

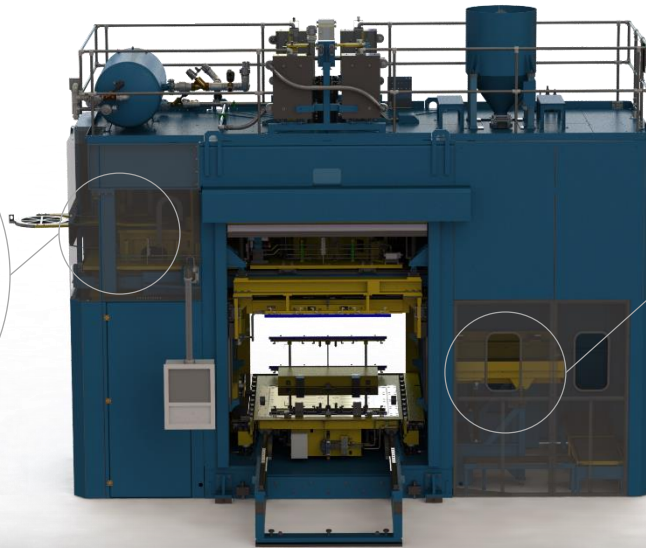


Technical data	C1L-100	C1L-130
Shoot volume [liters]	80 - 120	80 - 120
Corebox size maximum [mm]	1500 x 1500	1700 x 1700
Shoot area maximum [mm]	1200 x 1200	1400 x 1400
Corebox weight maximum [kg]	7000	9000
Closing force horizontal	1000 kN	1300 kN
Dry cycle time* [s]	18	20
Machine dimensions WxDxH [mm]	Ca. 6600x5100x5100	Ca. 7000x5400x5700

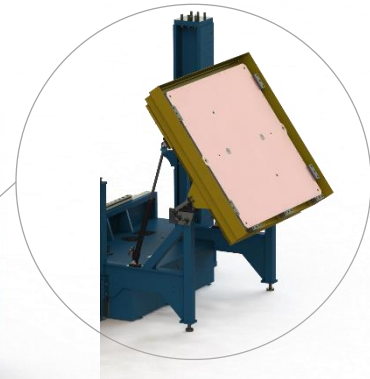
* machine cycle time in automatic mode without parameters for shooting time, gassing, exhaust
- considering stroke optimized horizontal parted toolings



shoot screen changer



shootplate cleaning
sand removal



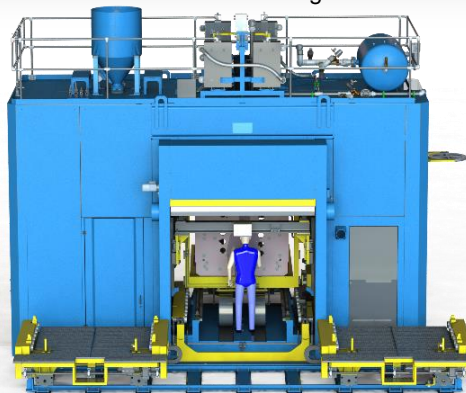
Advantages and special functions

- powerful shooting system
- shootplate cleaning station
- 90° turnable tooling top part
- automatic shoot screen changer
- automatic tool changer with separable double carriage for better machine access
- Patented high efficient Lüber gassing process
- Energy-efficient hydraulic unit
- state of the art graphical user interface
- modular design
- no pit/special foundation needed

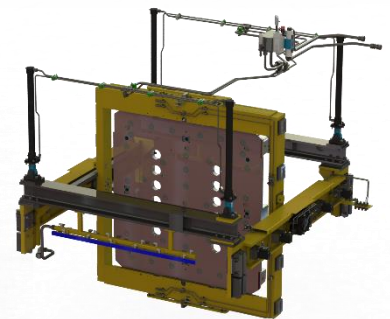
energy-efficient
hydraulic unit



automatic tool changer



rotary tooling top part



split supply of catalyst and
hot purge air (patented)



closed filling-system for shoot
unit in inorganic production
- no sand dry out -

